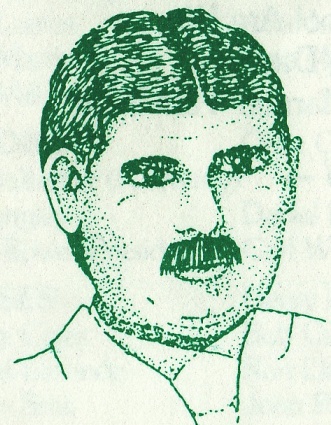


The Pembroke Community Choir
with Orchestra presents

A Tribute to

GILBERT and SULLIVAN



SUNDAY, APRIL 29, 1990
FESTIVAL HALL — 8:00 p.m.

Kevin Nieman: Director

Rosemary Gilbert: Accompanist

"The Gilbert and Sullivan operettas are light and tuneful. Sullivan had a gift for writing simple, charming melodies. Gilbert's plots make fun of the plots of serious operas and also of English nobility and government. Gilbert was a master of tricky rhymes and breathless, tongue-twisting "patter songs" and his rhythms often gave Sullivan the rhythm for his melodies. Sullivan's music is more than just a series of melodies; it is full of skillful counterpoint and the clever use of voices and instruments."

A TRIBUTE TO GILBERT & SULLIVAN

Gondoliers: Overture — Orchestra
List and Learn
From the Sunny Spanish Shore
In a Contemplative Fashion
Dance a Cachucha

Iolanthe: When All Night Long a Chap Remains
When Britain Really Ruled the Waves
If We're Weak Enough to Tarry

Mikado: Overture — Orchestra
Three Little Maids from School Are We
Brightly Dawns our Wedding Day
Finale: For He's Gone and Married Yum-Yum

— BRIEF INTERMISSION —

Pirates of Penzance: Overture — Orchestra
Poor Wand'ring One!
Major-Generals Song
Hail Poetry
Chorus "Tarantara"

H.M.S. Pinafore: Overture — Orchestra
Let's Give Three Cheers for the Sailors Bride
A Many Years Ago
Finale: Oh Joy, Oh Rapture Unforeseen!

— THE END —

Soloists: Larry Scales, Ron Lloyd, Ruth Grant, Linda Clark

THE PEMBROKE COMMUNITY CHOIR, now in its 31st year, rehearses every Monday evening at 7:30 p.m. in the Wesley Community Standard Church, 210 Renfrew St., Pembroke. New members are most welcome.

We take part in the Kiwanis Music Festival and have entertained the residents of Marianhill, Miramichi and Pinewood homes for the aged. **The Pembroke Community Choir is a member of the Valley Arts Council and The Ontario Choral Federation.**

ACKNOWLEDGEMENTS

THANK YOU to CHRO Radio and TV, Pembroke Observer, The Advertiser News, The Greater Pembroke Enterprise, My Fair Lady, Kevin's Flowers - Petawawa, Wesley Community Standard Church and to all who contributed in any way to the success of this special occasion.

THE PEMBROKE COMMUNITY CHOIR

SOPRANOS

Patricia Charette	Marjorie Alburger (Ways & Means)	Joyce Brown
Lynne Dunn	Linda Clark	Myrla Dixon
Joyce Moore (Life Member & VAC Rep.)	Patricia Harmer	Brenda Pulham
Wendy Bond	Inge Beck	Jocelyn Philippi
Shirley Detlefsen (Publicity & PP)	Betty Ann Jurmalietis	Lomie Coleman
Sandy Liedtke (Contact)	Jo Petermann	Janet Gow
Carolyn Mohns		Susan Lowe
		Norma Webb (Social)

ALTOS

Lorna Bourns	Beth Barras	Janet Brennan	Lynn Biesenthal
Marion Burton (Treasurer)	Trudy Bredewold	Lucille Brown (Contact)	Janet Cairns
Wendy Donohue	Margaret Gervais	Penny Campbell	Dolores Chenier
Maureen Havey	Donna Leonard	Ruth Grant (Life Member & Concert Chairman)	
Judy Lantos	Alice Leclair	Rita Hemmings (Vice-President)	
Ruth Martin	Reta McBean	Adrienne Madill (Librarian)	
Judy Valliant-Bucholtz		Pauline Neilson	Christa Reitlingshoefer

TENORS

Lee Gallagher (Secretary)	Olive Coburn (Contact)	Bill Collins	Mac Fraser
Bill Langley	Daniel Lynch	Mickey Hammond	Pauline Wingle-Land
Betty Rowe (President)	Carl Webb (Social)	Diane McCanna	Ernest Ruhnke

BASSES

Arthur Coles	Henry Akre (Life Member)	Jim Gilbert	Gordon Brandstadt
Gerald Laronde	Bob Carmichael	Charles O'Connor (Contact)	Bill Hugli
Adrien Smit	Ron Lloyd	Larry Scales	Harry Willoughby
	John Potter		

ORCHESTRA

Violin I — Michelle Woods, Cindy Nicholas

Violin II — Bill Selander, Mark Gilbert

Flutes — Jon Möller, Dianne Farrell

Bassoon — Ann Serdula

Oboe — Kathi Selander

Cello — Hal Tracey

Bass — Tabitha Bucholtz

Clarinets — Ann Dickson, Ted Clifford

Trumpet — Gordon Tapp

KEVIN NIEMAN — Choral Director A.Mus(Perf)

His musical studies have included voice (solo performance), piano, organ, oboe and cello. Kevin has been choir director and choir director/organist for Christ Lutheran Church, Petawawa over the past 16 years, as well as musical director, performer and conductor for the Pembroke Musical Society. This is Kevin's sixth year as Choral Director of the Pembroke Community Choir. He is an associate of the Western Conservatory of Music affiliated with the University of Western Ontario, London.

ROSEMARY GILBERT — Accompanist

Born in England, Rosemary came to Canada with her family in 1972. Mrs. Gilbert studied piano in England and more recently with Horst Thuemen in Pembroke. She was involved with community choirs in Alberta and this is her third year as accompanist for the Pembroke Community Choir.